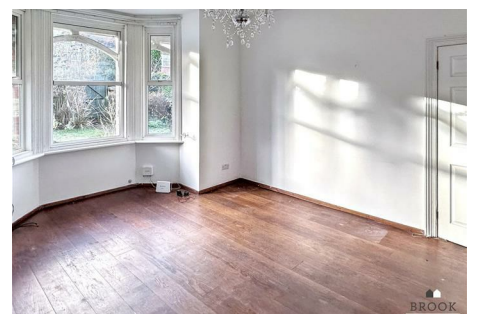




BROOK GAMBLE



Ground Floor Flat, 108 Willingdon Road , Eastbourne, BN21 1TW

EMAIL ENQUIRIES ONLY - Brook Gamble are delighted to let this really good sized one bedroom ground floor apartment in the popular Old Town area of Eastbourne. Boasting its own private garden to the front of the property, the flat is available immediately. The flat enjoys good sized split-level accommodation and benefits from gas central heating and uPVC double glazing. Well located close to Eastbourne District General Hospital and popular local schools, bus stops are close by with services into Eastbourne Town Centre and surrounds. Any tenant wishing to pursue the property must generate an income of £28,500 in order to successfully pass the referencing process.

£950 Per Month

Ground Floor Flat, 108 Willingdon Road , Eastbourne, BN21 1TW



- EMAIL ENQUIRIES ONLY
- Private Garden
- Close EDGH
- UPVC Double Glazing
- Available Immediately
- Private Entrance
- Close Popular Schools
- Ground Floor Flat
- Sought After Old Town Location
- Gas Central Heating

Entrance Lobby

8'8 x 5'11 (2.64m x 1.80m)

Entrance Hall

Lounge

16'2 into bay x 13' (4.93m into bay x 3.96m)

Bedroom

12'3 x 12'11 (3.73m x 3.94m)

Kitchen

10'8 x 10'3 (3.25m x 3.12m)

Bathroom

Outside

Security Deposits



Directions

